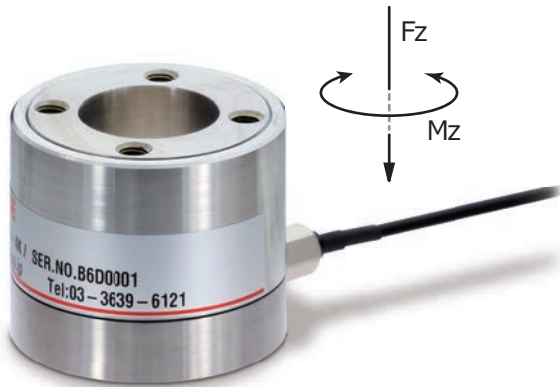


URT-20-5K / FS200

DUAL-AXIS LOAD CELL



DUAL-AXIS LOAD CELL URT-20-5K

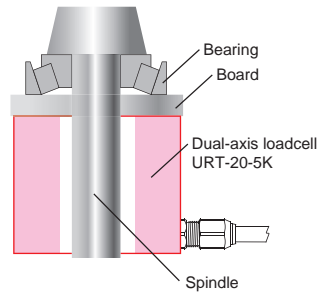
Thrust force and Torque are measured simultaneously. Phenomenal safe overload!! URT-20-5K is a dual-axis load cell having 2 kHz high-speed responsivity and high-rigidity.



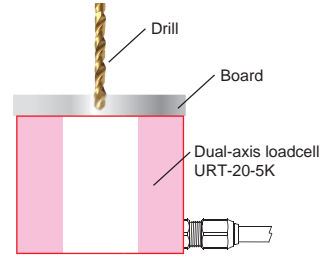
Product-specific amplifier

Rated Output is adjusted at ± 5 V in both Mz and Fz direction. Just connect a sensor and apply 24 V to it, then adjusted voltage will be outputted simultaneously. Any calibration settings are not required.

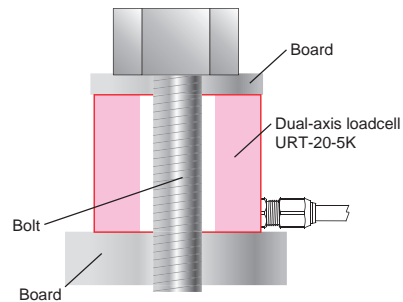
Torque test for tapered bearing



Cutting characteristics test for drill

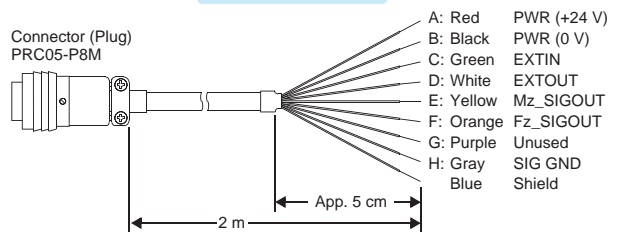


Friction measurement test for bolt head



Attached cable

Flexible cable



Specifications

Model	Sensor: URT-20-5K, Amplifier: FS200
Rated capacity	Mz: ± 20 Nm, Fz: 5 kN
Power supply voltage	DC 24 V $\pm 15\%$
Consumption current	150 mA or less
Load signal output	Mz, Fz: ± 5 V
Load resistance	2 k Ω or more
Response	2 kHz
I/O signal	Input: Auto zero command Output: Auto zero response
Safe overload	Mz: 500% FS, Fz: 400% FS
Non-linearity	Mz: 0.1% FS typ., Fz: 0.5% FS or less
Hysteresis	Mz: 0.1% FS typ., Fz: 0.5% FS or less
Repeatability	Mz: 0.1% FS typ., Fz: 0.5% FS or less
Cross talk	Mz (20 Nm) Fz: 0.05 kN or less Fz (5 kN) Mz: 0.2 Nm or less
Compensated temp. range	0 to +40°C
Safe temp. range	-10 to +50°C
Temp. effect on zero	0.1% FS/°C or below
Temp. effect on span	0.05% FS/°C or below
Sensor material	Stainless steel
Weight	Sensor: Approx. 250 g Amplifier: Approx. 180 g

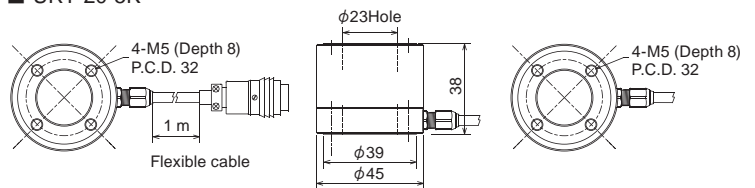
* Above specifications are achieved when the sensor (URT-20-5K) is connected with the dedicated amplifier (FS200).

* Accuracy is not guaranteed in the range of Fz 0 to -5 V.

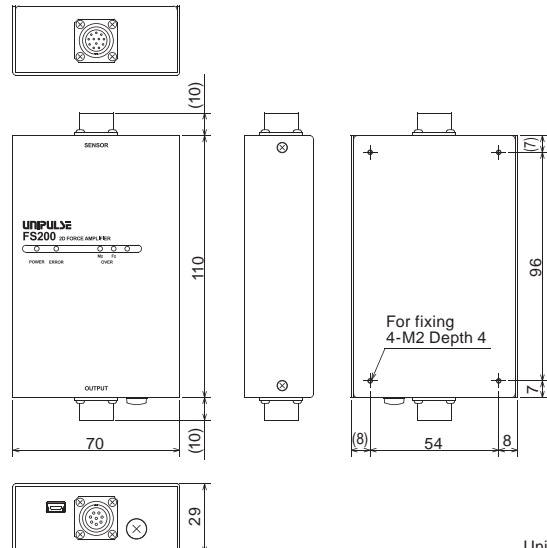
* Please note that there are possibilities of individual differences in a color tone on display devices such as LEDs, fluorescent display tubes and LCDs due to manufacturing process or production lots.

External dimension

URT-20-5K



FS200



Unit: mm