

S40A

TENSION TYPE LOAD CELL

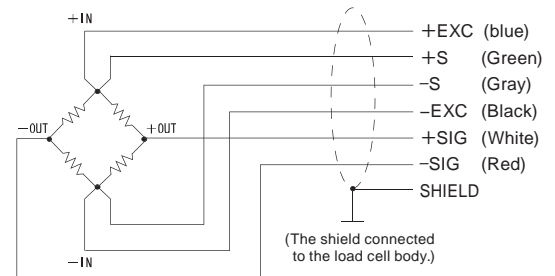


IP68

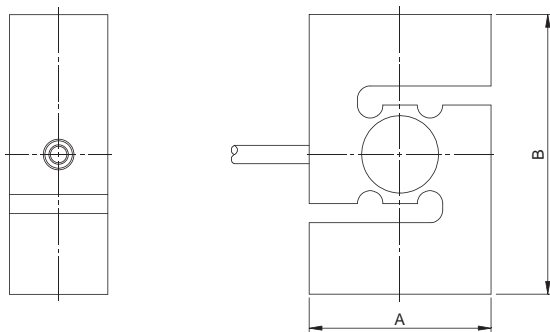
Specifications

Model	S40A-50KG, S40A-100KG, S40A-200KG S40A-500KG, S40A-1T, S40A-2T
Rated capacity	50 kg, 100 kg, 200 kg, 500 kg, 1 t, 2 t
Rated output	2 mV/V±0.25%
Maximum safe overload	150% R.C.
Zero balance	0±0.01 mV/V
Non-linearity	0.0180% R.O.
Hysteresis	0.0170% R.O.
Creep	0.0166% R.O./30 min
Compensated temperature range	-10 to +40°C
Safe temperature range	-30 to +70°C
Temperature effect on zero	0.0170% R.O./10°C
Temperature effect on span	0.0140% R.O./10°C
Input resistance	350 or more
Output resistance	350±1.5
Recommended excitation voltage	5 V
Maximum excitation voltage	12 V
Insulation resistance	5000 M or more
Degrees of protection	IP68
Cable	φ5.4 6-conductor shield cable 6 m Cable end: 7 wires
Load cell material	Stainless steel

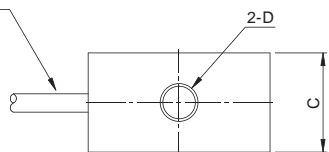
Wiring diagram



External dimension



φ5.4 6-conductor shield cable 6 m
Cable end: 7 wires *



Unit: mm

* Connector can be attached to the cable according to your requests.

Model	Deflection at rated	Weight	A	B	C	D
S40A-50KG	0.15 mm±15%	0.6 kg	50.8	63.5	25.4	M8
S40A-100KG	0.15 mm±15%	0.7 kg	50.8	76.2	25.4	M12
S40A-200KG	0.15 mm±15%	0.7 kg	50.8	76.2	25.4	M12
S40A-500KG	0.15 mm±15%	1.1 kg	57.2	87.3	31	M12
S40A-1T	0.25 mm±15%	1.1 kg	57.2	87.3	31	M12
S40A-2T	0.38 mm±15%	1.7 kg	69.8	100	36.5	M24x2