

ULE-50

DIGITAL CONTACT SENSOR

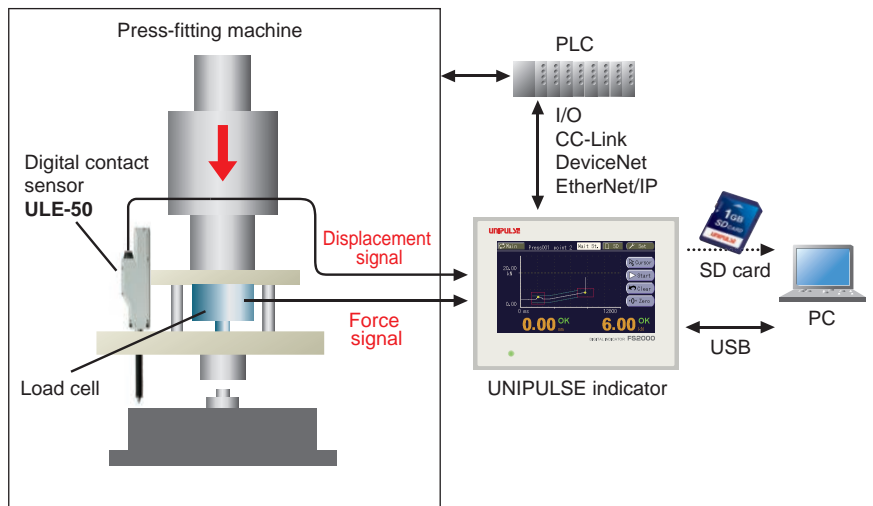


Digital contact sensor that is easily connectable to UNIPULSE indicator. You can perform OK/NOK judgment with a Force vs Displacement curve.

Flexible cable

- Easy connection.
As ULE-50 has a built-in amplifier, no additional device is required. Just connect ULE-50 to a UNIPULSE indicator using a cable, then it will be activated instantly.
- Wide measuring range & high-accuracy
Measuring range: 50 mm
Resolution: 2.5 μm
- High noise immunity
RS-422A communication provides stable data transmission.
- Applications
 - Press-fitting
(Force vs Displacement curve can be shown on a UNIPULSE Indicator)
 - Inspections of a positioning stage
 - Height measurement in swaging process
 - Height measurement in screwing process

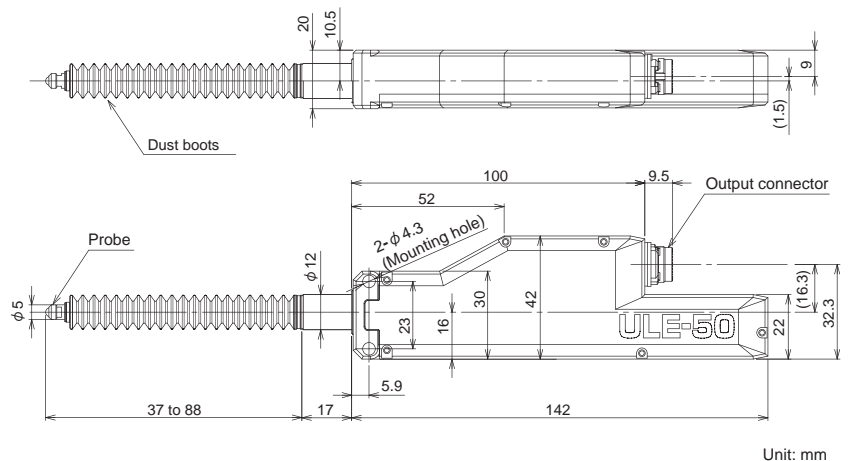
Example of use: Press-fitting with Force vs Displacement measurement.



Specifications

Model	ULE-50	
Method	Incremental	
Measuring range	50 mm	
Resolution	2.5 μm (when connected to a UNIPULSE indicator)	
Measuring force	Downward	Approx. 2.8 N (at 50 mm)
	Side	Approx. 2.6 N (at 50 mm)
	Upward	Approx. 2.3 N (at 50 mm)
Operational temp. range	-10 to +40°C	
Storage temp. range	-20 to +60°C	
Output signal	Differential line driver signal with 90° phase difference (RS-422A compliant)	
Cable	Flexible cable 2 m	
Cable color	Red (PWR+), Blue (PWR-) Pink (A+), Blown (A-) Yellow (B+), Green (B-), Shield	
Weight	Approx. 350 g	
Power supply voltage	DC 4.5 to 30 V	
Current consumption	Approx. 0.1 A or less	
Accessories	ULE-DB: Dust boots	

External dimension



Unit: mm