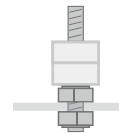




Threaded-type load cell with male screws on both ends
Less impact on accuracy against lateral load & easy-to-install



Installation example



Installation with a nut is recommended.

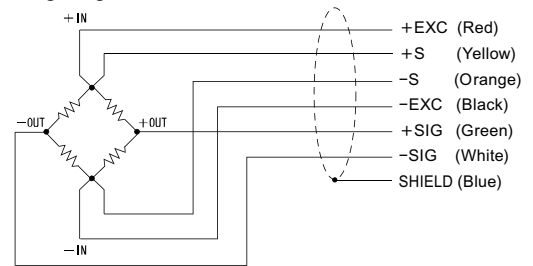


An end rod can be installed directly.

Specifications

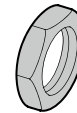
Model	UIS-1KN, UIS-2KN, UIS-5KN	UIS-10KN, UIS-20KN	UIS-50KN	UIS-50KN-S
Rated capacity	1 kN, 2 kN, 5 kN	10 kN, 20 kN	50 kN	50 kN
Rated output	Approx. 1.0 mV/V			
Safe overload	300% R.C.			
Zero balance	±10% R.O.			
Non-linearity	0.2% or less R.O.			
Hysteresis	0.2% or less R.O.			
Repeatability	0.1% or less R.O.			
Compensated temperature range	-10 to +60°C			
Safe temperature range	-20 to +70°C			
Temperature effect on zero	0.5% R.O./10°C or below			
Temperature effect on span	0.5% R.O./10°C or below			
Input resistance	Approx. 1000 Ω			
Output resistance	Approx. 1000 Ω			
Recommended excitation voltage	5 V			
Maximum excitation voltage	7.5 V			
Insulation resistance (DC 50 V)	1000 MΩ or more			
Cable	φ2.5 6-conductor flexible cable 3 m, Cable end: 7 wires	φ5 6-conductor flexible cable 3 m, Cable end: 7 wires		
Load cell material	Stainless steel			
RoHS directives	2011/65/EU (EU)2015/863			

Wiring diagram



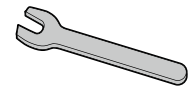
Attachments

Low-profile nuts ×2



Optional accessories

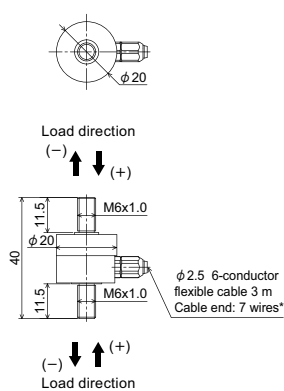
Low-profile spanner



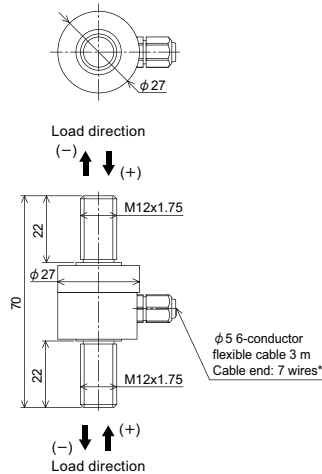
* For UIS-10KN, 20KN, 50KN and 50KN-S.

External dimension

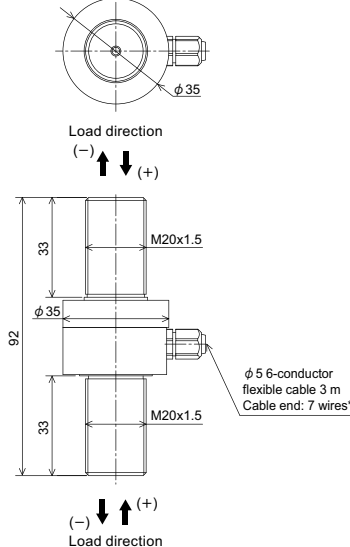
UIS-1KN/2KN/5KN



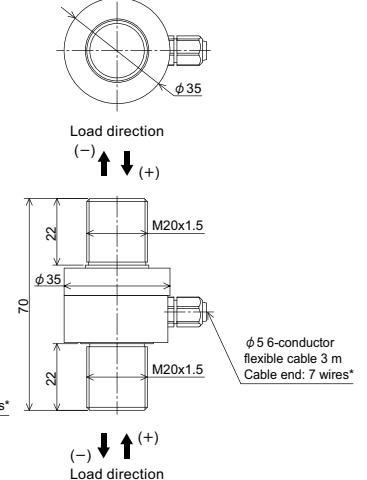
UIS-10KN/20KN



UIS-50KN



UIS-50KN-S



Model	Deflection at rated	Natural frequency	Weight
UIS-1KN	0.015 mm	2 kHz	Approx. 30 g
UIS-2KN	0.014 mm	3 kHz	Approx. 30 g
UIS-5KN	0.021 mm	5 kHz	Approx. 30 g
UIS-10KN	0.025 mm	15 kHz	Approx. 100 g
UIS-20KN	0.040 mm	15 kHz	Approx. 100 g
UIS-50KN	0.070 mm	13 kHz	Approx. 260 g
UIS-50KN-S	0.050 mm	16 kHz	Approx. 210 g

Unit: mm

* Connector can be attached to the cable according to your requests. Refer to 84 pages for details.