

# UNTCH CENTER-HOLE TYPE LOAD CELL

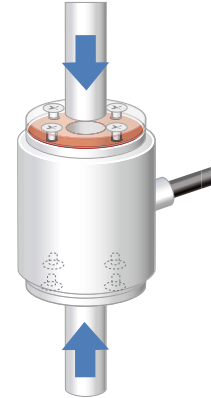


## Specifications

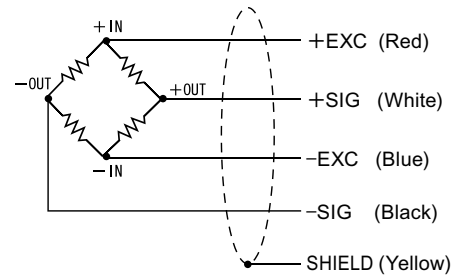
Model	UNTCH-5KN, UNTCH-10KN, UNTCH-20KN UNTCH-50KN, UNTCH-100KN
Rated capacity	5 kN, 10 kN, 20 kN, 50 kN, 100 kN
Rated output	1 mV/V±1%
Safe overload	120% R.C.
Zero balance	±5% R.O.
Non-linearity	0.5% or less R.O.
Hysteresis	0.5% or less R.O.
Compensated temperature range	-10 to +70°C
Safe temperature range	-30 to +80°C
Temperature effect on zero	0.1% R.O./10°C or below
Temperature effect on span	0.1% R.O./10°C or below
Input resistance	Approx. 350 Ω
Output resistance	Approx. 350 Ω
Recommended excitation voltage	10 V
Maximum excitation voltage	20 V
Insulation resistance (DC 50 V)	2000 MΩ or more
Cable	φ6 4-conductor shield cable 3 m Cable end: 5 wires
Load cell material	Special alloy steel
RoHS directives *	2011/65/EU (EU)2015/863

\* Supported only for UNTCH-50KN

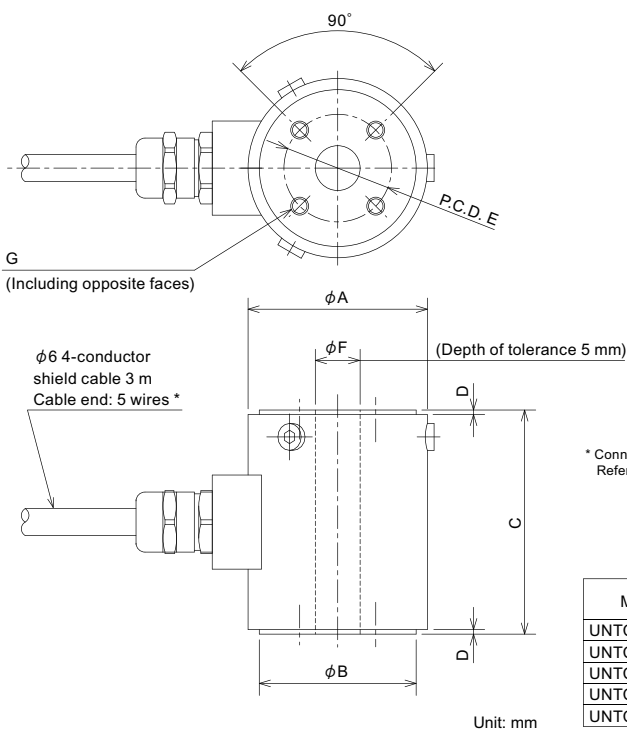
## Application example



## Wiring diagram



## External dimension



\* Connector can be attached to the cable according to your requests. Refer to 84 pages for details.

Model	Deflection at rated	Natural frequency	Weight	A	B	C	D	E	F	G
UNTCH-5KN	0.025 mm	13 kHz	330 g	40	35h7	50	1	24	10H8	8-M4 Depth 8
UNTCH-10KN	0.025 mm	7 kHz	930 g	62	55h7	70	2	44	18H8	8-M5 Depth 8
UNTCH-20KN	0.045 mm	11 kHz	1.0 kg	62	55h7	70	2	44	18H8	8-M5 Depth 8
UNTCH-50KN	0.050 mm	14 kHz	1.0 kg	62	55h7	70	2	44	18H8	8-M5 Depth 8
UNTCH-100KN	0.065 mm	20 kHz	1.0 kg	62	55h7	80	2	44	18H8	8-M5 Depth 8

Unit: mm