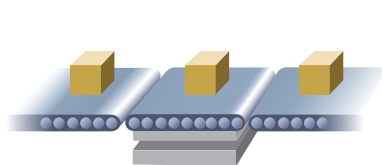


# F741-C

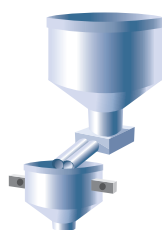
WEIGHING INDICATOR for PROFIBUS



- CE Marking Certification
- High noise resistance and stable indicated values
- Compatibility of fieldbus, serial and analog outputs  
PROFIBUS, RS-232C, D/A converter
- Comparison modes convenient for checker and hopper scales



Checker scale

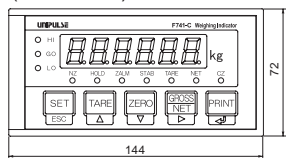


Hopper scale

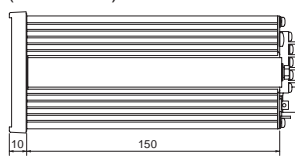
- Simple operation by bright LED and large keys
- High speed A/D conversion and powerful digital processing capabilities of 100 times/sec., for rapid response to input signal.
- 100V to 240V AC is supportable without switching.
- DIN 144 x 72 for easy installation.

## External dimension

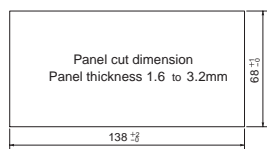
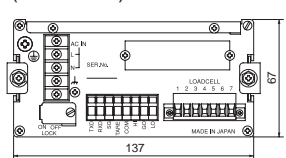
(Front View)



(Side View)



(Rear View)



Unit mm

## Specifications

ANALOG	Excitation voltage	DC10V±5% Output current: within 120mA Remote sense type (Up to 4 350Ω load cells can be connected in parallel.)
	Signal input range	-0.2 to 2.2mV/V
	Zero adjustment range	0 to 2.0mV/V Automatic adjustment by digital processing
	Gain adjustment range	0.3 to 2.0mV/V Automatic adjustment by digital processing
	Minimum input sensitivity	0.3μV/count
	Accuracy	Non-linearity: within 0.01%/FS Zero drift: within 0.2μV/°C RTI Gain drift: within 15ppm/°C
	Analog filter	Bessel type low-pass filter (-12dB/oct) Cutoff frequency 2Hz
DISPLAY	A/D converter	Speed : 100 times/sec. (Internal sampling 3200 times/sec.) Resolution: 24bit (binary) Effective resolution: 320000 or more (With respect to -0.2 to 2.2mV/V)
	Display	Numerical display tube: 14mm in character height Numerical display by 7-segment green LED (6 digits)
	Measured value	6-digit, sign: Minus sign on most significant digit
	Display frequency	Select from 3, 6, 13 or 25 times/sec. (The system speed is 100 times/sec.)
EXTERNAL SIGNAL	Unit	g, kg, t, lb, N, oz, and kN selectable (kg printed: Others are changed by the attached label.)
	Status display	NZ / HOLD / ZALM / STAB / TARE / NET / CZ / HI / GO / LO / COMPL / SP2 / SP1
INTERFACE	Output signal	HI / GO / LO (Can be changed to COMPL / SP2 / SP1) Transistor open collector output (Emitter = COM terminal) Output is set to LO when transistor is ON.
	Input signal	TARE Set to ON when shorted to COM terminal through contact point (relay, switch etc.) or non-contact point (transistor, open collector output such as TTL etc.)
GENERAL SPECIFICATIONS	INTERFACE	*232: RS-232C communication interface *DAC: D/A converter (option) Current output 4 to 20mA *PRF: PROFIBUS interface (option) PROFIBUS-DP V0 Only 1 option can be installed
	Power supply voltage	AC100 to 240V (+10% -15%) (free power source 50/60Hz)
	Power consumption	4W typ
	Rush current	18A, 1.5mSec. ... 100V AC average load condition (cold start at room temperature) 42A, 1.6mSec. ... 240V AC average load condition (cold start at room temperature)
	Operation condition	Temperature Operation: -10 to +40°C Storage: -20 to +85°C Humidity 85%RH or less (non-condensing)
	External dimension	144(W) x 72(H) x 160(D) mm (not including protrusions)
ATTACHMENTS	Weight	Approx. 1.0kg
	AC input cord 3m.....1 Unit and status indication label.....1 Mini driver.....1 Jumper line.....2 Connector for D/A converter (when D/A converter option is selected).....1 Operation manual.....1	
OPTIONAL ACCESSORIES	CA325AC3P-B3: AC input cord 3m	
	CA325AC3P-CEE7/7-B2: AC input cord (voltage resistance 250V) 2m	
	CN70: Connector for D/A converter	
	CN80: Load cell input connector terminal	

## Structure of product code

F741-C □  
① ②

① Standard unit

② Interface

Sign	Interface
Standard	RS-232C
DAC	D/A converter (Current)
PRF	PROFIBUS

↓ One optional interface can be added in addition the standard interface.